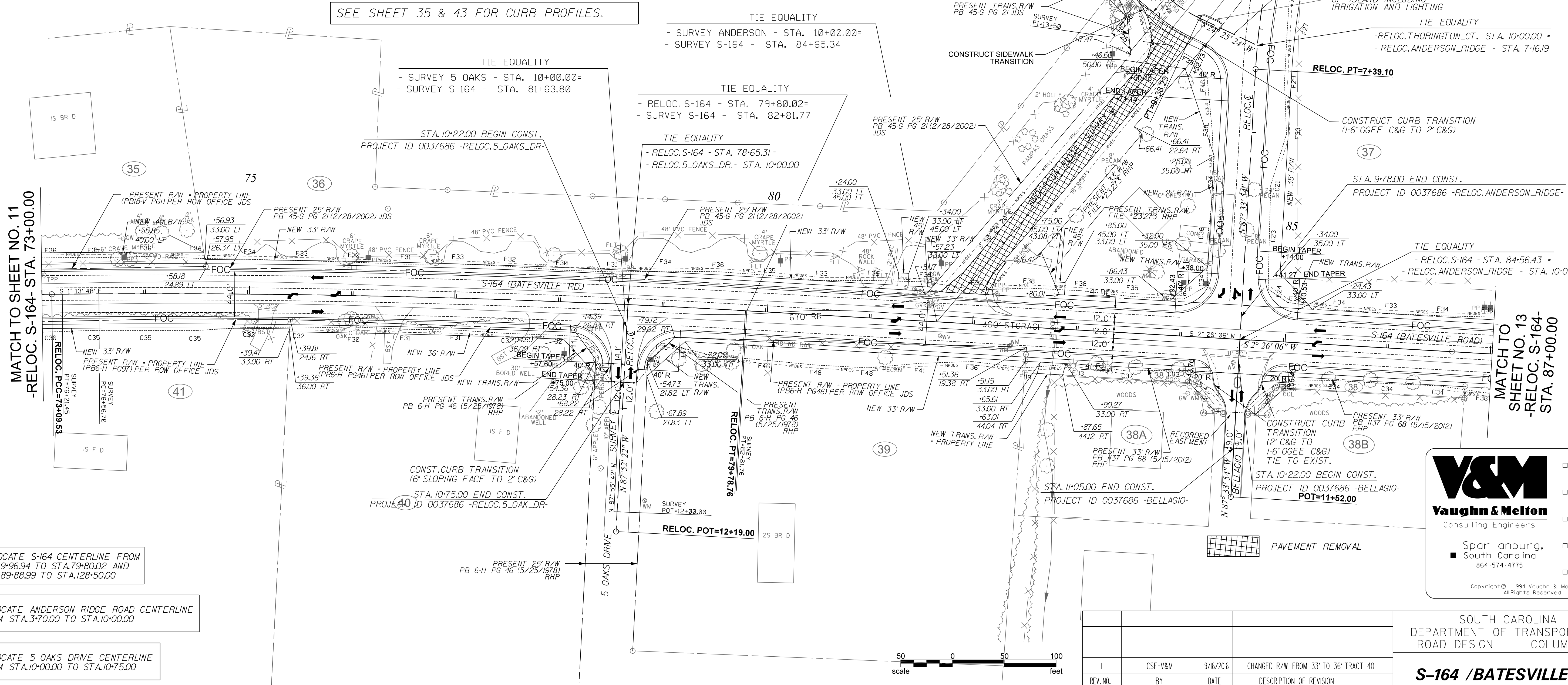


# CONSTRUCTION PLANS

FED. RD. DIV. NO.	STATE	COUNTY	PROJECT ID	ROUTE NO.	SHEET NO.
3	S.C.	GREENVILLE	0037686	S-164	12



- SEE SHEET 12A FOR BATESVILLE ROAD PROFILE.
- SEE SHEET 24 FOR 5 OAKS DRIVE PROFILE.
- SEE SHEET 25 FOR THORINGTON COURT PROFILE.
- SEE SHEET 25 FOR ANDERSON RIDGE ROAD AND BELLAGIO WAY PROFILES.
- SEE SHEET 35 & 43 FOR CURB PROFILES.

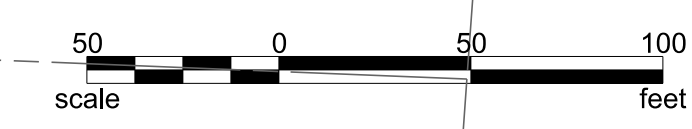


MATCH TO SHEET NO. 11  
-RELOC. S-164- STA. 73+00.00

MATCH TO SHEET NO. 13  
-RELOC. S-164- STA. 87+00.00

- RELOCATE S-164 CENTERLINE FROM STA. 9+96.94 TO STA. 79+80.02 AND STA. 89+88.99 TO STA. 128+50.00
- RELOCATE ANDERSON RIDGE ROAD CENTERLINE FROM STA. 3+70.00 TO STA. 10+00.00
- RELOCATE 5 OAKS DRIVE CENTERLINE FROM STA. 10+00.00 TO STA. 10+75.00

ALIGNMENT CONTROL CAN BE FOUND ON REFERENCE DATA SHEETS 5A - 5I.



**V&M**  
Vaughn & Melton  
Consulting Engineers

Spartanburg,  
South Carolina  
864-574-4775

- Asheville, North Carolina 828-253-2796
- Charlotte, North Carolina 704-357-0488
- Tri-Cities, Tennessee 423-467-8400
- Knoxville, Tennessee 865-546-5800
- Middlesboro, Kentucky 606-248-6600

Copyright © 1994 Vaughn & Melton, Inc.  
All Rights Reserved.

REV. NO.	BY	DATE	DESCRIPTION OF REVISION
1	CSE-V&M	9/16/2016	CHANGED R/W FROM 33' TO 36' TRACT 40

SOUTH CAROLINA  
DEPARTMENT OF TRANSPORTATION  
ROAD DESIGN COLUMBIA, S.C.

**S-164 / BATESVILLE ROAD  
PLAN SHEET**

SCALE 1"=50'    RTE. S-164    DWG. NO. PNI